



WARNING!

1.877.FASTOYS

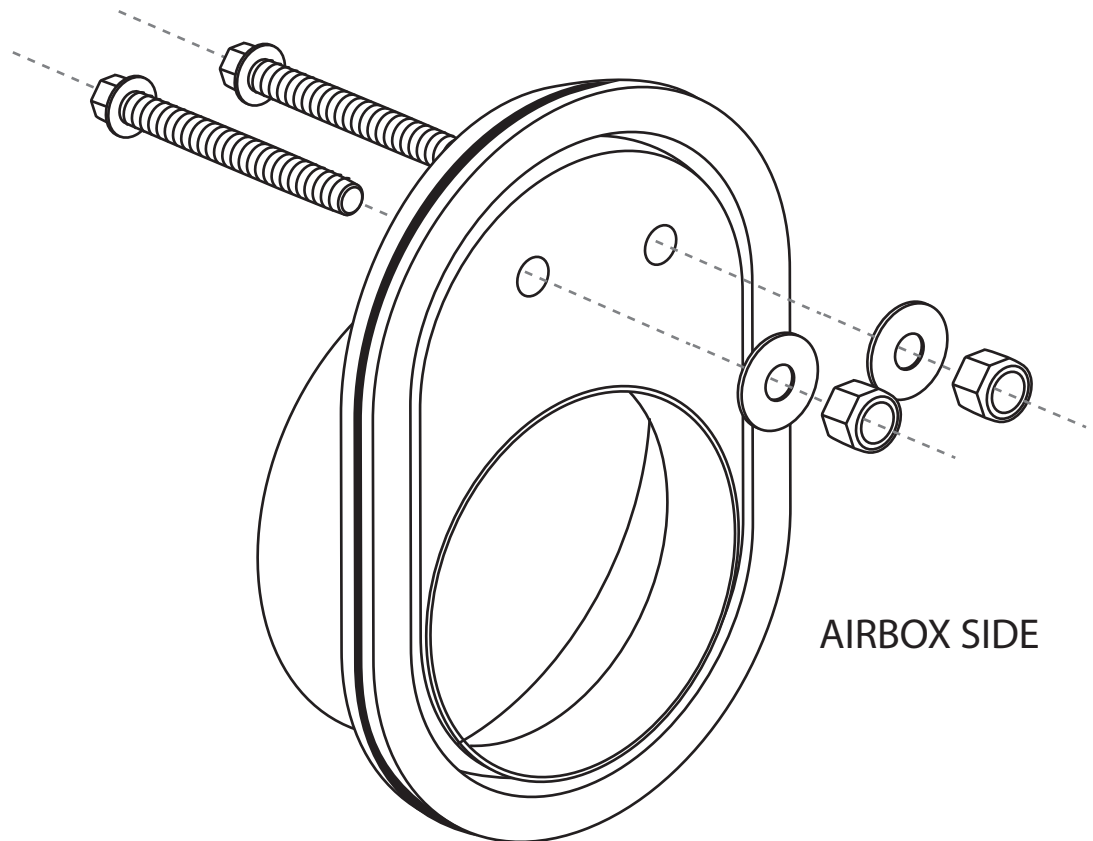
TRINITY RACING DOES NOT TAKE RESPONSIBILITY FOR DAMAGES THAT MAY OCCUR DURING OPERATION OF YOUR VEHICLE UNDER IMPROPER JET SETTINGS. IT IS THE FINAL RESPONSIBILITY OF THE OWNER/RIDER TO ADJUST JETTING TO SPECIFIC RIDING CONDITIONS AND ELEVATION BEFORE RIDING.

PLEASE FOLLOW ALL OF THESE INSTRUCTIONS CAREFULLY.

RHINO 700 POWERFLOW INTAKE INSTRUCTIONS

PARTS AND INSTALLATION PROCEDURE

1. Remove the stock filter and airbox from your UTV. Place billet adapter into the airbox and drill two 1/4" holes through your airbox using the two holes in the billet adapter as a template.
2. Install the two 6mm bolts into the billet adapter, then place the two billet spacers on the underside of the adapter. Slide airbox onto the adapter and secure with washers and nylox nuts.
3. Apply thin coat of grease on the edge O-Ring on the billet adapter. Reinstall the air box assembly with lid (if you choose to reinstall the airbox lid) onto the UTV. Be sure to tighten and double-check all the nuts and bolts you have installed.
4. Install the filter onto the billet adapter and make sure the rubber neck of the air filter is completely free of oil. Tighten the filter clamp securely, but do not over tighten and cut into the rubber neck of the filter. Now install the outerwear over the filter.
5. We recommend you use our Stage IV Fuel Management Controller for optimum performance and adjustability.



THANK YOU FOR YOUR BUSINESS. HAVE A FUN AND SAFE RIDE!